

# EL<sup>®</sup>MARK

The Brand of Electricity

## GRF5 LED POOL LIGHT

### GENERAL INFORMATION »

- ∴ Type: Ground recessed fixture
- ∴ Input voltage: AC85-265V; DC12V
- ∴ Power: 3W
- ∴ LED driver: Waterproof isolated driver
- ∴ Colour temperature: 3000K; 4000K
- ∴ LED source: SMD2835
- ∴ Housing: Aluminum
- ∴ Body colour: Grey
- ∴ Cover: 3mm 201 stainless steel cover
- ∴ Colour rendering index: Ra > 80
- ∴ Installation: Recessed outdoor ground mounting
- ∴ Protection against dust and moisture: IP68



### FEATURES »

- ∴ Highly efficient replacement of conventional lighting fixtures
- ∴ Low power consumption
- ∴ Repeated switch on/off does not affect the lifespan of the fixture
- ∴ Instant light with maximum luminous flux
- ∴ Environmentally friendly - no mercury and lead
- ∴ No ultraviolet and infrared rays
- ∴ Resistant to shock and vibration stable body
- ∴ Low heat emission
- ∴ Compact size

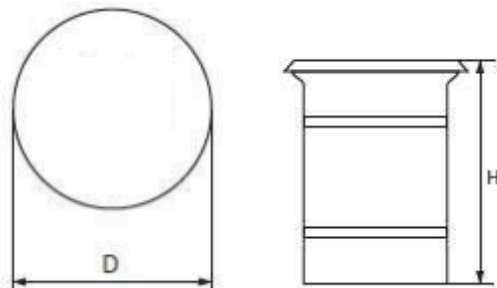
## AREA OF APPLICATION »

- ∴ Suitable for outdoor use
- ∴ Swimming pools
- ∴ Fountains
- ∴ Gardens
- ∴ Parks

## PRODUCT DETAILS »

Catalogue number	Voltage	Watt (W)	Whole fixture lumens (lm)	Beam angle	Colour temp. (K)
96GRF5/31512WW	12V	3	260	15°	3000
96GRF5/31512	12V	3	260	15°	4000

## DIMENSIONS »



Catalogue number	D (mm)	H (mm)
96GRF4/524220WW	62	100
96GRF4/524220	62	100

